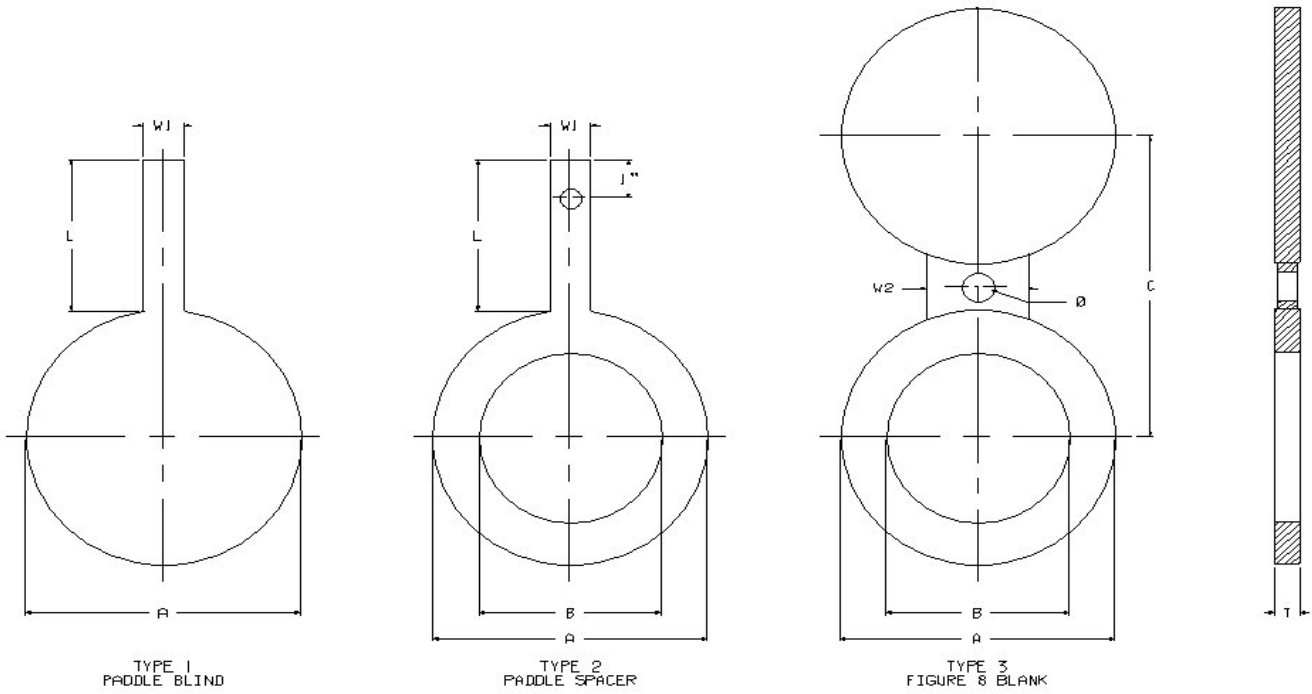


FABERFAB ASME B16.48 ANSI 150# RAISED FACE / FLAT FACE



SIZE	DIMENSIONAL DATA (INCHES)								APPROX. WEIGHT (LB)		
	A	B	C	T	L	W1	W2	Ø	1	2	3
1/2	1.75	0.62	2.38	*0.25	4.00	1.00	1.50	N/A	1	1	1
3/4	2.12	0.82	2.75	*0.25	4.00	1.00	1.50	N/A	1	1	1
1	2.50	1.05	3.12	*0.25	4.00	1.00	1.50	N/A	1	1	1
1 1/4	2.88	1.66	3.50	0.25	4.00	1.00	1.50	N/A	1	1	1
1 1/2	3.25	1.90	3.88	0.25	4.00	1.00	1.50	N/A	1	1	2
2	4.00	2.38	4.75	0.25	4.00	1.00	2.00	N/A	2	1	2
2 1/2	4.75	2.88	5.50	0.25	4.00	1.00	2.00	N/A	2	2	3
3	5.25	3.50	6.00	0.25	4.00	1.00	2.50	N/A	2	2	3
3 1/2	6.25	4.00	7.00	0.38	4.00	1.00	2.50	0.750	4	3	6
4	6.75	4.50	7.50	0.38	4.00	1.00	2.50	0.750	5	3	7
5	7.62	5.56	8.50	0.38	4.00	1.00	3.00	0.875	6	3	8
6	8.62	6.62	9.50	0.50	4.00	1.00	3.00	0.875	9	4	13
8	10.88	8.62	11.75	0.50	4.00	1.00	3.00	0.875	14	6	19
10	13.25	10.75	14.25	0.62	5.00	1.00	4.00	1.000	26	10	34
12	16.00	12.75	17.00	0.75	5.00	1.50	4.00	1.000	45	18	60
14	17.62	14.00	18.75	0.75	5.00	1.50	4.25	1.125	54	21	73
16	20.12	16.00	21.25	0.88	5.00	1.50	4.25	1.125	81	31	110
18	21.50	18.00	22.75	1.00	5.00	1.50	4.50	1.250	106	33	136
20	23.75	20.00	25.00	1.12	5.00	1.50	4.75	1.250	144	44	185
24	28.12	24.00	29.50	1.25	5.00	1.50	5.50	1.375	223	63	283

\* THICKNESS EXCEEDS ASME B16.48 REQUIREMENTS

SIZE	RATING	TYPE	MATERIAL	GASKET SURFACE	FINISH
1/2 - 24	150#	1 = PADDLE BLANK 2 = PADDLE SPACER 3 = FIGURE 8 BLANK	1 - A516 GR 70 2 - OTHER SPECIFY	1 - 125 - 250 AARH 2 - OTHER SPECIFY	1 - PRIMER 2 - OTHER SPECIFY